



SPORTSMEN'S TENNIS
& ENRICHMENT CENTER

Tennis & Education for Life

ANNUAL REPORT

JULY 1, 2023 - JUNE 30, 2025



Table of Contents

Letter from Leadership	2
Our Mission	3
Board of Directors	3
Tennis	4
The Learning Center	5
Summer Camp and Learning Programs	8
Center for Community Wellness	10
The Tennis Ball: Celebrating Impact and Inspiration	11
Highlights, Major Milestones, and Growth	12
Partners	14
Statement of Financial Position	15
Donors and Supporters	16

Letter from Leadership

Dear Friends,

Over the past two years, Sportsmen's has experienced one of the most transformative periods in our 65 year history. Through every milestone, our mission has remained the anchor of our work: to build leaders on the court, in the classroom, and in the community by providing academic and social development programs alongside recreational and competitive tennis instruction for youth and adults. This mission continues to guide every decision we make and every program we deliver.



Toni Wiley, *CEO*

The completion of the first phase of our campus expansion has already reshaped life at 950 Blue Hill Avenue. Our new four-court indoor building expanded court capacity by nearly 60%, allowing us to serve more youth, families, and adult players through free, subsidized, and fee-based programs. More importantly, it expanded access, opening the door for greater participation, engagement, and more opportunities for growth.



Marilyn Chase,
Board Co-Chair

The enhancement of our Academic Wing has been equally significant. Newly constructed classrooms now give us the flexibility to reach more students and strengthen the academic and enrichment support at the core of our mission. These learning environments are designed for focused study, collaboration, and programs that nurture confidence, curiosity, and leadership.

During this period of construction and growth, our staff, coaches, volunteers, and board members remained steadfast in their commitment to the community. Our dedication ensured that our hallmark programs, from USTA/UTR tournaments and School-to-Sportsmen's to Summer Camp and Volley Against Violence, continued to grow in strength and impact.



Paul Ridker,
Board Co-Chair

This progress was made possible through broad community support, including a significant grant from Mackenzie Scott's Yield Giving, and a combination of major contributions and countless additional gifts. Together, this support made our momentum possible.

As we look ahead to the next phase of our expansion, we do so with deep gratitude for everyone who believes in Sportsmen's and in the potential of the young people we serve.

With appreciation,

Toni Wiley, *CEO*
Marilyn Chase, *Board Co-Chair*
Paul Ridker, *Board Co-Chair*



[Watch Marilyn, Toni and Paul discuss the evolution of Sportsmen's.](#)



Our Mission

The Sportsmen’s mission is to build leaders on the court, in the classroom, and in the greater community by providing academic, wellness, and social development programs alongside recreational and competitive tennis instruction for youth and adults.

Sportsmen’s is committed to improving life opportunities for youth along Boston’s Blue Hill Corridor while welcoming a diverse community from the Greater Boston area.

Board of Directors (FY24 and FY25)

Marilyn Chase

Co-Chair
Former Assistant Secretary
for Health and Human Services,
Commonwealth of MA

Paul Ridker, MD, MPH

Co-Chair
Director of the Center for
Cardiovascular Disease Prevention,
Mass General Brigham

Clara Arroyo

Treasurer
CFO, Boston Plan for Excellence

Lindsey Dashiell

Secretary
Attorney

Scott Babka

CFO and Board Member
One Mighty Mill

Freddie Jacobs, Jr.

CEO, Northeast Retirement
Services, LLC

Emeritus and Founding Members

Ray Green

Emeritus Board Member

Bill Benjes

Managing Principal
Covalent Partners LLC

Mildred Jones

Retired Senior Business Analyst,
Liberty Mutual Group
Founding Board Member

Conway Haynes

Founding and Emeritus Board Member

Ruth Birnberg

Consultant

Cecilia Joseph

Retired, Healthcare Administrator

Albert Lewis

Founding and Emeritus Board Member

Victor Bowen

Credit Analyst,
New Balance Athletics

Guy Ronen

Nonprofit Executive,
Brother For Life

Sue Denny

Retired Consultant

Dan Solomon

Chief of the Section of Clinical
Sciences in Rheumatology,
MassGeneral Brigham

Brett Dickens

Assistant Superintendent
for Secondary Schools and College,
Career & Life Readiness,
Boston Public Schools

Charles Stewart

AVP Business Development,
Marion Edward & Associates

Harit Doshi

Co-founder and CEO,
Omnilyt Technologies

Jen Stempel

Director, Deloitte Consulting

Bob Frank

Retired, Nonprofit IT Professional

Frank Williams

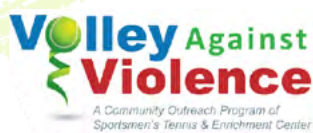
Retired Patrol Officer,
Boston Police Department

Tennis

At Sportsmen's, tennis is a powerful tool for growth. Our youth and adult programs combine top-tier instruction with a supportive environment where players build skills, discipline, and a love of the game. We've introduced the game of tennis to hundreds of youth and have supported more than a hundred players competing at high levels. Many have earned recognition such as high school All Scholastics, MVP, and League All Star honors, and have been ranked among the top 25 players in New England.

Now in its 16th year, Volley Against Violence (VAV), a partnership with the Boston Police Department, has brought youth from across the city to Sportsmen's for free Friday-night tennis and mentorship. Each week, more than 50 kids ages 6–16 build confidence, teamwork, and leadership through tennis-based activities. What started in 2009 with just eight participants is now one of Sportsmen's longest-running and most impactful community programs.

Our adult programs offer a variety of ways to play and improve. Some players enjoy weekly contract time with friends, others start their day at Breakfast Club, sharpen their skills in lessons or clinics, or play competitively on our teams. Many teams have reached or even won league playoffs or advanced to compete at the district, sectional, and national levels.



“One of the most incredible things about playing on a team at Sportsmen’s is the camaraderie. . . We are not only competitive but supportive. We work hard but we have fun, we laugh a lot. Support is the word that really comes to mind.” - PAYAL

WATCH VIDEO



“When I first picked up a racquet, it was pure joy... then a spark ignited. What if I could be the first in my family to play professionally? I poured my heart and soul into the game. Today, I stand as proof that anything is achievable... an active Trailblazer.” - AMIR

WATCH VIDEO



YOUTH TENNIS

Building excellence on and off the courts for children ages 5+

3,400+
in total

1,900 in free community programs

600 in developmental tennis programs

600 in tennis camps

250 in tournament training

600 additional youth engaged in high-level competitive tennis through 116 tournaments hosted by Sportsmen's.

60% of the youth who walk through our doors attend at no cost.

15% attending fee-based programs receive financial aid.

ADULT TENNIS

380 Adult Members

250 players in Breakfast Club & Friday Night Tennis

225 participating in tennis clinics

250 members of our Men's and Women's leagues

USTA & UTR TOURNAMENTS HOSTED





The Learning Center

The Learning Center is Sportsmen's academic home, providing high-quality academic support and enrichment programs for children across the Blue Hill Corridor. Our model blends one-on-one tutoring, project-based learning, online literacy and math curricula, and enrichment in fitness, nutrition, gardening, music, art, and hands-on science. Each program is paired with tennis, reinforcing our mission of Tennis & Education for Life.

Over the past two years, the Learning Center has undergone a major transformation. As demand for early academic support increased, we rebuilt and expanded our classrooms to better serve young learners. The \$1 million renovation created brighter, more flexible spaces and increased our capacity. One student captured it best: "We leveled up."

These investments are reflected in student outcomes. More than 80% of students in our after-school or summer programs improve at least one level in math, science, or English language skills, and 100% of our scholar-athletes have graduated high school on time. Through School to Sportsmen's, 52 K-3 students receive daily intensive support, and 65% of our third graders read at grade level compared with 33% in neighboring schools. We are proud of this progress and determined to reach 100%.

At a time when third-grade reading proficiency shapes long-term success, our work is rooted in urgency and belief. Staff, volunteers, and families work together to help students build confidence, strengthen skills, and discover clear pathways to future opportunities.



"One of my favorite places [at Sportsmen's] is The Learning Center. It's where I go after school to get help with my homework, learn new things, and spend time with teachers who really care. What makes The Learning Center special is that the teachers don't just show you how to do something, they go through it with you. They take the time to explain it until you understand. That makes a big difference." - MARBELYS

WATCH VIDEO



THE LEARNING CENTER

Academic and enrichment programs
for K–5 students

375+
in total

50+ in School to Sportsmen's (STS)

75 in Summer Learning Academy (SLA)

350 in Sportsmen's Tennis & Fitness Camp

84% are age 8 or younger

80% of students made strong academic
improvements over the course of the program

60% of students who began behind grade level
attained or exceeded grade-level benchmarks
in reading and math.

School To Sportsmen's students, on average,
increase Literacy & Math performance by at least
one grade level.



Summer Camp and Learning Programs

Sportsmen's delivers high-quality summer experiences that keep youth active, learning, and supported throughout the summer months.

Summer Camp

Our full-day, 8-week Summer Camp serves youth ages 5–13 with tennis, enrichment, and academic support. More than 350 campers have participated over the past two years, and nearly half receive full or partial scholarships. The program includes both traditional camp activities and a Tournament Training Camp for competitive players. Sportsmen's is also one of the largest providers of homeless camperships through the Philanthropy Massachusetts Homeless Camper Fund.



Tournament Training Camp

Sportsmen's Tournament Training is designed for junior players committed to competition and growth. With small player-to-coach ratios, high-intensity drills, and match-play simulation, athletes build consistency, strategy, and mental toughness. Each summer, nearly 90 juniors train to compete locally, regionally, and nationally, gaining the skills and confidence to perform at a high level.

Summer Learning Academy (SLA)

Co-managed with Boston Public Schools and Boston After School & Beyond, SLA is a five-week, tuition-free academic enrichment program for rising 3rd–5th graders. 75 BPS students participated, focusing on math and literacy progress, ACT skill development, and integrated learning through sport and enrichment.

Together, these programs help prevent summer learning loss, strengthen academic confidence, and provide joyful, enriching experiences for Boston youth.





SUMMER CAMP

Summer camp enrollment and work opportunities

350 Summer camp enrollment

36 Students employed

\$76,000 in scholarships in partnership with NeighborShare, Summer Fund, and Sportsmen’s fundraising activities

90 Tournament Training Camp participants



Center for Community Wellness

The Center for Community Wellness (CCW) works to build a culture of health and expand health justice along the Blue Hill Corridor. CCW strengthens access to wellness resources, deepens community partnerships, and addresses the structural barriers that contribute to health disparities in Dorchester, Roxbury, and Mattapan.

Our approach centers on prevention and whole-person well-being, responding to neighborhood needs shaped by high rates of obesity, diabetes, hypertension, stroke, and heart disease. CCW offers culturally responsive health education, fitness and nutrition programs, mental health support, and opportunities for residents to build healthier habits at every age.

Over the past two years, CCW has engaged hundreds of residents through health screenings, focus groups, and community education. Highlights include monthly Health EChats, culturally grounded cooking programs, CPR certifications, and the 2024 and 2025 Glory to Glory Symposiums, which brought together more than 170 participants to focus on equity, justice, economic mobility, and mental health.

Together, these initiatives reflect Sportsmen's belief that health equity begins in the community and that accessible, trusted wellness programs are essential for families across the Blue Hill Corridor.

Community health screenings and participants served

500+ in screenings, focus groups, and educational programs.

170+ at 2024 and 2025 Glory to Glory Symposiums, promoting health equity and justice, DEI, economic mobility, and mental health.

16+ years of Volley Against Violence with Boston Police Dept. partners

20+ CPR certifications

100+ at Diabetes Conference with Greater Love Tabernacle

7 Health Chats (approximately 70 participants) Topics included Self-Care, Health Goals, Colon Cancer, Diabetes, Primary Care Visits, Healthy Eating, and Stress Management

Monthly community hub for blood pressure checks and accessible health information.





The Tennis Ball: Celebrating Impact and Inspiration

The annual Tennis Ball is Sportsmen's most important fundraising event and a celebration of the people and partners who elevate our mission. Over the past two fiscal years, our galas have brought the Sportsmen's community together to honor leadership, recognize excellence, and spotlight the young people who represent our future. Together, the 2023 and 2024 Galas raised more than a million dollars to support our programs, our students, and our expanding campus.

We also re-envisioned the Tennis Trailblazers Award. After years of celebrating those who shaped the history of our club, we shifted focus to the trailblazers of tomorrow, the Future Trailblazers. These are the young people on our courts and in our classrooms whose accomplishments reflect the values of Sportsmen's founders and the future of our mission.

At the 2023 and 2024 Galas, we honored:

Community Builder Award:

Liberty Mutual Insurance (2023)
The Boston Foundation (2024)

Tennis Trailblazer Award:

American Tennis Association (2023)

Future Trailblazers Awards:

Julia Bae and John "JD" Dickens (2024)

Distinguished Alumni Award:

Karen O'Sullivan and Jerry O'Sullivan (2023)

Surprise Special Honor:

Peter Roth (2023)
Craig Underwood (2024)



These celebrations lifted up the achievements of our honorees and highlighted the strength and impact of the Sportsmen's community. Each year's Gala reinforces our shared belief in opportunity, access, and the power of tennis to change lives.

Highlights, Major Milestones, and Growth

A Transformative Investment in Our Future

In March of 2024, Sportsmen's received a \$2 million grant from MacKenzie Scott's Yield Giving Open Call, a national initiative that recognizes community-led organizations improving well-being in areas of greatest need.

The award reflected strong peer review and affirmed the impact Sportsmen's has made for more than six decades. The funds were used to support programs, facilities, and long-term growth.



Honoring Our Hall of Fame Inductees

In June 2024, USTA New England inducted Sportsmen's founding members Conway Haynes and Albert "Bootsie" Lewis into the USTANE Hall of Fame.

Along with that of Founding Board Member Mildred Jones, Jim and Gloria Smith, and five other visionaries, their leadership, laid the foundation for what Sportsmen's has become today. Their commitment to equity, community, and opportunity continues to shape every part of our work 65 years later.



Celebrating Toni Wiley, Champion of Equality

Sportsmen's CEO, Toni Wiley, was honored at the 2024 US Open with the Billie Jean King Champions of Equality Award, recognizing her leadership in expanding access and opportunity in tennis across New England. In addition to serving as our CEO, Toni holds leadership positions on the USTA New England and American Tennis Association boards of directors, and leads the USTA's National Diversity, Equity & Inclusion Committee. She was celebrated alongside 16 USTA Section honorees with remarks from ABC's Robin Roberts, Maria Sharapova, Billie Jean King, and Shonda Rhimes.



Highlights, Major Milestones, and Growth



Phase 1 Success: Building a Stronger Sportsmen's

In October 2024, we completed Phase 1 of our Capital Campaign, raising nearly \$9 million to enhance our facilities and expand our reach. We proudly accomplished this work without incurring any debt. We are now working hard to finish strong and remain debt free in FY2027.

Key accomplishments included:

New Indoor Building:

Added four indoor courts, increasing our capacity by nearly 60% for free, subsidized, and fee-based programs.

Expanded Academic Wing:

Created additional classrooms to serve more students, enhancing our educational support.

Safety and Accessibility Upgrades:

Upgraded restrooms, added a sprinkler system, improved electrical facilities, and increased storage space.



A National Stage for Rising Athletes

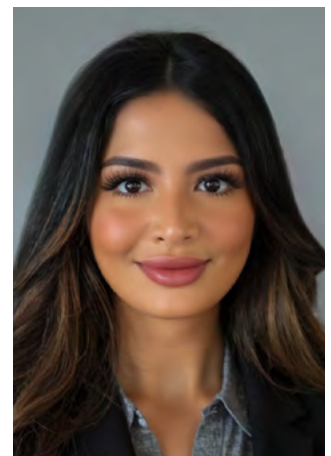
Sportsmen's hosted a USTA Level 2 Girls' 18s Singles and Doubles National Tournament in February of 2025, welcoming top junior competitors from more than a dozen states across the country. The event underscored Sportsmen's role as a premier host site for high-level competition and a pathway for young athletes aspiring to collegiate and national success.



Expanding Support With a Youth & Family Social Worker

In March of 2025, we welcomed Dareen Ali as Sportsmen's first Youth & Family Social Worker, strengthening our commitment to whole-child development. In her role, Dareen helps students and families navigate challenges at school and at home, integrates mental and behavioral health support into daily programming, and partners with staff to reinforce positive behaviors, de-escalation techniques, and restorative practices.

She also builds connections with Boston Public Schools, supports crisis response, and provides guidance to students in our Learning Center and Summer Camp programs. Equally important, Dareen is helping to build a robust Employee Assistance Program for Sportsmen's staff and coaches. Together, this work ensures that every young person who walks through our doors is supported not only as a student and athlete, but as a whole person and that the adults who mentor them are supported as well.



Partners (July 2023 to June 2025)

American Heart Association
 Boston After School & Beyond
 Boston College - 4Boston
 Boston College Connell School of Nursing
 Boston Police Department
 Boston Public Schools with TLC
 Boston Ski + Tennis
 Brigham & Women's Hospital (now Mass General Brigham)
 City Year Greater Boston
 Change the Game Coalition
 Dana Farber Cancer Institute Center for Cancer Equity and Engagement
 Deloitte
 Deloitte Impact Day

Family Van (Harvard Medical School)
 Good Sports
 Greater Love Tabernacle
 Liberty Mutual Insurance
 Serve with Liberty
 Lupus Foundation
 Messina College
 Milton Academy
 New Balance
 One World Strong
 PAL of Massachusetts
 Pink and Black Boston
 Positive Coaching Alliance
 PTR - Professional Tennis Registry

Rally4Racquets
 Rally for Rackets
 Rodman for Kids
 Special Olympics Massachusetts
 ThinkGive
 United Way of Mass Bay
 Urban Farming Institute
 USTA Coaching
 USTA Foundation
 USTA Nationals
 USTA New England
 UTR Sports
 Vital CxNs
 Wilson



Statement of Financial Position

Year ended June 30, 2025 and 2024

ASSETS	2025	2024	LIABILITIES AND NET ASSETS	2025	2024
CURRENT ASSETS			CURRENT LIABILITIES		
Cash and cash equivalents	\$3,501,384	\$3,314,856	Accounts payable and accrued expenses	\$335,639	\$1,214,277
Grants and contributions receivable	\$290,874	\$185,000	Deferred revenue	\$56,442	\$24,507
Prepaid expenses	\$50,708	\$108,717	TOTAL CURRENT LIABILITIES	\$392,081	\$1,238,784
TOTAL CURRENT ASSETS	\$3,842,966	\$3,608,573			
OTHER ASSETS			NET ASSETS		
Grants and contributions receivable, net of current portion and discount	\$222,291		Net assets without donor restrictions	\$10,923,997	\$4,962,356
PROPERTY & EQUIPMENT			Net assets with donor restrictions	\$3,149,879	\$6,860,640
Property and equipment, net	\$10,400,700	\$9,453,207	TOTAL NET ASSETS	\$14,073,876	\$11,822,996
TOTAL ASSETS	\$14,465,957	\$13,061,780	TOTAL LIABILITIES AND NET ASSETS	\$14,465,957	\$13,061,780

STATEMENT OF ACTIVITIES YEAR ENDED JUNE 30, 2025

REVENUE	Without Donor Restrictions	With Donor Restrictions	Total
Grants and contributions	\$477,223	\$4,093,399	\$4,570,622
Fundraising events, net	\$335,445	-	\$335,445
Tennis programs	\$1,115,829	-	\$1,115,829
Court fees, net	\$430,734	-	\$430,734
Enrichment programs	\$257,326	-	\$257,326
Membership dues	\$100,882	-	\$100,882
Tournament revenue	\$88,257	-	\$88,257
Other income	\$10,973	-	\$10,973
Interest income	\$117,481	-	\$117,481
Net assets released from donor restrictions	\$7,804,160	(\$7,804,160)	-
TOTAL REVENUE	\$10,738,310	(\$3,710,761)	\$7,027,549
EXPENSES			
Program	\$2,959,261	-	\$2,959,261
Management and general	\$1,211,121	-	\$1,211,121
Fundraising	\$606,287	-	\$606,287
TOTAL EXPENSES	\$4,776,669	-	\$4,776,669
Changes in net assets	\$5,961,641	-\$3,710,761	\$2,250,880
Net assets, beginning	\$4,962,356	\$6,860,640	\$11,822,996
NET ASSETS, ENDING	\$10,923,997	\$3,149,879	\$14,073,876

STATEMENT OF ACTIVITIES YEAR ENDED JUNE 30, 2024

REVENUE	Without Donor Restrictions	With Donor Restrictions	Total
Grants and contributions	\$2,540,885	\$1,884,636	\$4,425,521
Fundraising events, net	\$393,733	-	\$393,733
Tennis programs	\$802,754	-	\$802,754
Court fees, net	\$307,832	-	\$307,832
Enrichment programs	\$207,660	-	\$207,660
Membership dues	\$85,151	-	\$85,151
Tournament revenue	\$62,169	-	\$62,169
Other income	\$11,877	-	\$11,877
Interest income	\$173,508	-	\$173,508
Net assets released from donor restrictions	\$1,321,106	(\$1,321,106)	-
TOTAL REVENUE	\$5,906,675	\$563,530	\$6,470,205
EXPENSES			
Program	\$2,468,898	-	\$2,468,898
Management and general	\$759,316	-	\$759,316
Fundraising	\$583,683	-	\$583,683
TOTAL EXPENSES	\$3,811,897	-	\$3,811,897
Changes in net assets	\$2,094,778	\$563,530	\$2,658,308
Net assets, beginning	\$2,867,578	\$6,297,110	\$9,164,688
NET ASSETS, ENDING	\$4,962,356	\$6,860,640	\$11,822,996

Donors and Supporters

\$1M and above

Yield Giving
Peter and Julie Roth

\$500K to \$999,999

Early Education and Care

\$250K to \$499,999

Scott and Alison Babka
Cummings Foundation
Susan Denny and Christian Nolen
Liberty Mutual Foundation
USTA Foundation
Wellington Management
Foundation

\$100K to \$249,999

Anonymous
Action for Boston Community
Development
Daniel Solomon and Mindy Berman
The Boston Foundation
Richard K. Lubin Family Foundation
Amelia Peabody Foundation
New Balance Foundation
Mabel Louise Riley Foundation
Rowland Foundation
United Way of Massachusetts Bay

\$50K to \$99,999

Adidas Foundation
Jeffrey and Mandy Bass
Laury Hammel and Robin Young
John Hancock
Life Insurance Company
Mass General Brigham
Richard and Susan Smith
Family Foundation
Lisa Tung and Spencer Glendon
US Tennis Association

\$25K to \$49,999

American Tower Foundation
City of Boston
Brett and Kary Dickens
Economic Development & Industrial
Corporation of Boston
Lincoln and Therese Filene
Foundation

Robert Frank and Jennifer Coplon
Raymond and Joan Green
The Hamilton Company
Charitable Foundation

Jeanne Leszczynski
and Diane DiCarlo
Mass. Department of Elementary
and Secondary Education
Philanthropy Massachusetts
Play Sports Coalition
Shannon Community
Safety Initiative
Brian Spector
TD Charitable Foundation
The Thoracic Foundation
c/o Taylor, Ganson, & Perrin, LLP
Robin and Perry Traquina

\$10K to \$24,999

Anonymous (4)
Ascienzo Family Foundation
Christiana Bardon
Jeannie Chung and Donald Bae
The Baupost Group
The Beker Foundation
Becky Kidder-Smith
Boston After School & Beyond Inc.
Community Bank
Commonwealth Corporation
Armando Dockery
Scott Ebner and Daniel L. Dona
Dorothy Bruno Hills
Indoor Tennis League
Eastern Bank
Charitable Foundation
Robert and Rebecca Forrester
Eva Kalawski
Laura Ketchum
Kaplan Construction
Anita Klaussen
Liberty Mutual Insurance
MGB Center for Community
Health and Health Equity
Frank R. Peters Trust
The Plymouth Rock Foundation
The William and Lia G. Poorvu
Family Foundation
Project SixLove Corp
Rodman for Kids
Stanley Shepard

Isaac Stahl
Trefler Foundation
USTA New England
Damian and Yndia Wilmot

\$5K to \$9,999

Anonymous (2)
Amy and David Abrams
Lucille Becker
Bethel AME Church
Ruth Birnberg and Tom Shapiro
Blue Cross Blue Shield
of Massachusetts
Boston Celtics
Shamrock Foundation
Boston Police Athletic League
Richard and Mara Calame
Casner & Edwards, LLP
Marilyn and Richard Chase
Dan and Lisa Davis
David and Katrina Driscoll
Kristen Dean
Fortin Building Systems Inc.
David Fialkow
Martha Golub
Steven Gortmaker and Betsy Pugh
Lionel and Irene Harris
Mildred Jones
Cecilia Joseph
Sharon and Jonathan Kleefield
Laura Ketchum
Dennis and Heena Lee
Richard and Georgia Lee
Lekker Home
Longfellow Tennis
& Health Club Wayland
Longfellow Wellesley
Martignetti Companies
Nellie Mae Education Foundation
Natick Sports & Racquet Club, Inc
New Commonwealth Racial Equity
and Social Justice Fund
Caroline and Soren Oberg
Peter Olagunju
Alex Parks Communications
Plug Power
Lynnie Potter
Kathleen and Richard Riley
Kristen Russell

C. Payal Sharma
Silicon Valley Bank
Tennis 4 All
Christina Suh
Brian and Anne Trinqu
Craig Underwood
USTA National Diversity,
Equity & Inclusion
The Wold Foundation

\$2.5K to \$4,999

Anonymous (2)
Karen and Tom Aney
Jennifer and Phil Parrish
Kerry Boyd
Jeannette Bichara
Marci Blacker
Vincent Byrne
Citizens Bank
David and Lynne Champoux
Dean Chase
Jeremy Cohn
Codman Square Health Center, Inc.
Elaine Cosseboom
and William Schultz
Dana Farber Cancer Institute
Delta Sigma Theta Sorority
Gitika Desai
Manju Subramarian
and Anand Devaiah
Joyce Dibona
Sohrab Dinshaw
Harit Doshi
William Drake
Andrea K. Dupree
Kianga Ellis
Dan Field and Colleen Granahan
Ettra Gaines
Jennifer Goldstein
Hicks Auto Body Inc.
Russell Holmes
Charles Holmquest
Hubbard Health Consulting
Steven and Carol Kirson
Linda Knapp
Bharathan Kumaraguru
The Agnes M. Lindsay Trust
Christopher Malloy

Donors and Supporters *continued*

Karen Maund	Intent Clinical	PSMJ Resources, Inc.	Nina Ross
Laura McTaggart and Thomas C. Nolan	Lisa Cloitre	Karen and Jeffrey Jackson	CJ Rugani
Ilona Moreland	Copeland Family Foundation Inc	Kim Janey	Harriet Samuelson
David Morgan and Sowmya Rao	Don and Nancy Cordell	Alex Kaplan	Thomas L. Sansonetti
Carmel Mullee	Marie O'Sullivan Cox	Heather Keane	Mark Schatz
National Grid Foundation	Cruz Companies	Lindsey Keeler	Jessica Schmitz
New England Patriots Foundation	Theodore Daiber	Shabbi Khan	William Schrader
Vita Paladino	Henry DelMonico	M Kraus & Company	Jean F. Schulz
Nancy and Randy Parker	Deloitte	L&W Supply	Massachusetts Financial Services
Christine and Richard Siegrist	Priya Desai	Tim Leland	Michael Shore
Jennifer Stempel	Damien DeVasto	Kenneth Lewis	Cynthia and William Sibold
Valerie Stone and Kathryn Hall	New Atlantic Development	Peter Libby	The Sidman Family Foundation
Takeda Pharmaceuticals	John and Patty Donahue	Kathryn Link	Gerald and Peggy Simmer
Susan Westerling	Stitch House Dorchester	Claudia Lorge	Jennifer and Jason Skolnick
Hubbard White	Caitlin Dorigan	Rodney and Melissa Lukowski	Charlynn Mines-Smart and Wilbur Smart
Toni Wiley	Jessica Dumphy	Paul Lynch	Anne Smith
Frank Williams	Alison Dunn	John Martin	Andres Solorza
Jeremy Zuidema	Lee and Amy Ellsworth	Emily and Benjamin McClenahan	STEC Women's A-Gold Team
	Focus Real Estate	Steve McLaughlin	Dr. Lawrence T.P. Stifler
	Nate Feliciano	Margaret McMillan	Stone Family Charitable Foundation
\$1K to \$2,499	The Phyllis E. and Donald G. Campbell Foundation	Cyrus and Satu Mehta	Sara Subramanian
Anonymous	The M&T Charitable Foundation	Matt Moschner	Shannon Sullivan
Tyler and Maggie Abele	Phyllis and Donald Campbell Foundation	Richard Noce	David V. Taylor
Bindu Agrawal	Chatham Beech Charitable Foundation	Peter Norstrand	TD Bank
Yoshi Alexander	Donna France	NXT Athletics Institute for Learning	Franklin Templeton
Bank of America	Bettye and Robert Freeman	Jerry O'Sullivan	Ellen Terry
Wendy and Andrew Ames	Thomas Gaziano	Handel Obas	Edwin and Joan Tiffany
Anna Asphar	Peter Givertzman	Elena Olson	Joe Tully-Chambers and Sam Chambers
Jeffrey and Cynthia Babka	Sarah Glovsky	Alex and Leila Parks	Patty Wen and Robert Ullmann
Rich Balaban	Lena Godson	Wilfredo Pena	UTR Fundraiser Proceeds
Bruce Haimowitz & Ellen Ball	Michael Shwartz and Pamela Goodman	Katherine Bacon and Mark Pener	Pierre Valette
Dedham Savings Bank	Alison and Julie Gray	Emily Frelinghuysen Pluhar	Ruth Gonzalez Vega
Bruce Baron	Jill Greenberg	Jason and Alexandra Pogorelec	John S. Berman and Kerry Voss
Edward Bassett	Beth and Larry Greenberg	Point32Health	Cheryl Wamester
Joshua Beer	Joshua and Sarah Greenhill	Jay Prosnitz	Frank Wezniak
Brett Bentson	Matt Sly and Anna Groskin	Bernard Pucker	Sam Wilderman
Solomon Rosenberg and Aliza Berger	Sally Calame Grosskopf	Amelie Ratliff	Denise Snow Williams and Frank Williams
Scott Berman	David and Elisabeth Harris	Judy Ravindra	Bill Willis
Michael Borkowsky	Elizabeth Gail Hayden	Lisa Yevoli and David Ray	Edwin Medrano and Christopher Wood
Catherine Burke	Alveta and Conway Haynes	Allison Read	Jonathan Katz and Norah Wylie
Ruby Elder-Bush and Fendrick Bush	Estate of Anthony Cromwell Hill	Dan Restuccia	Amy and Eric Yee
Sandra Y. Cannon	Nora Frank and Walter Houseman	Paul and Susan Ridker	Andrew Zelsermyer
Phoebe and Job Chan	Hubbard Health Consulting LLC	Cindy Klein Roche	Edward Zucker
Gary Chin	Pamela Hughes	Guy Ronen and Michael Appell	
David Chung	Jody Hyvarinen	Emily Rooney	
Andrew Goodrich and Mary Cicconetti		Aliza Berger and Solomon Rosenberg	
		Erin K. Higgins and Douglas B. Rosner	